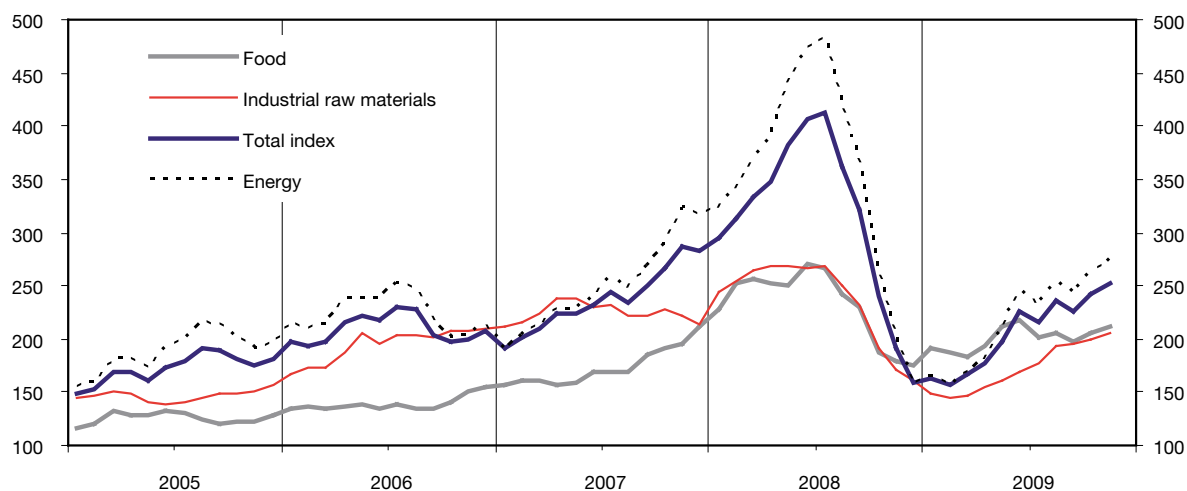


HWWI Index of World Market Prices of Commodities¹

(2000=100)



Commodity Groups ¹	2008	Mar. 09	Apr. 09	May 09	June 09	July 09	Aug. 09	Sep. 09	Okt. 09	Nov. 09
Total Index	315.8 (33.4)	166.2 (-50.2)	176.7 (-49.2)	198.3 (-48.3)	226.2 (-44.4)	216.2 (-47.7)	235.9 (-35.0)	226.9 (-29.5)	242.3 (1.2)	253.1 (32.6)
Total, excl. energy	236.0 (12.9)	158.4 (-39.7)	167.0 (-36.5)	176.8 (-32.8)	184.4 (-31.2)	183.6 (-31.5)	197.0 (-20.7)	195.4 (-15.3)	201.7 (5.9)	207.6 (19.7)
Food total	233.0 (34.3)	184.0 (-28.3)	194.1 (-22.9)	212.7 (-15.3)	217.5 (-19.5)	200.5 (-25.0)	205.9 (-15.3)	196.5 (-14.5)	206.3 (10.2)	212.1 (19.0)
Industrial raw materials	237.4 (5.7)	147.2 (-44.5)	155.1 (-42.2)	161.1 (-40.0)	169.9 (-36.3)	176.2 (-34.3)	193.1 (-23.0)	194.9 (-15.7)	199.7 (4.0)	205.6 (19.9)
Agricultural raw materials	150.7 (-3.5)	104.5 (-35.7)	107.2 (-33.6)	112.0 (-30.8)	116.7 (-29.0)	122.6 (-25.9)	131.5 (-16.0)	138.4 (-8.7)	145.8 (11.0)	152.8 (30.2)
Non-ferrous metals	242.2 (-11.1)	128.4 (-56.9)	144.5 (-51.1)	151.8 (-46.4)	167.1 (-39.4)	173.8 (-37.9)	203.7 (-20.0)	199.8 (-14.8)	205.1 (16.0)	212.3 (43.4)
Iron ore, steel scrap	482.2 (60.8)	324.6 (-33.0)	326.2 (-36.5)	331.9 (-39.3)	335.3 (-38.8)	342.5 (-37.1)	348.3 (-33.2)	349.8 (-23.8)	345.8 (-16.3)	344.5 (-12.6)
Energy	354.4 (41.6)	169.9 (-53.9)	181.4 (-53.3)	208.6 (-52.7)	246.4 (-48.1)	231.9 (-52.1)	254.7 (-39.1)	242.1 (-33.8)	262.0 (-0.4)	275.1 (38.0)

¹ On a US dollar basis. averages for the period; figures in brackets: percentage year-on-year change.

Further information: <http://www.hwwi-rohindex.org/>