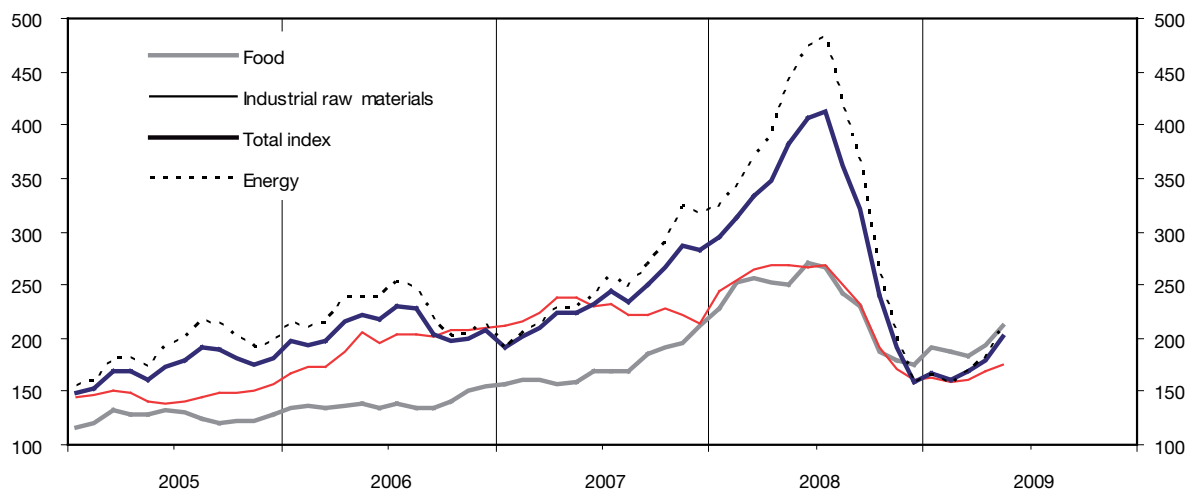


ECONOMIC TRENDS

HWWI Index of World Market Prices of Commodities¹

(2000=100)



Commodity Groups ¹	2008	Nov. 08	Dec. 08	Jan. 09	Feb. 09	Mar. 09	Apr. 09	May 09
Total Index	315.8	191.0	159.7	166.7	160.9	169.5	180.0	201.5
	(33.4)	(-33.6)	(-43.6)	(-43.6)	(-48.5)	(-49.2)	(-48.2)	(-47.4)
Total, excl. energy	236.0	173.5	164.7	171.7	167.7	168.5	177.1	186.9
	(12.9)	(-18.7)	(-22.7)	(-28.0)	(-33.7)	(-35.9)	(-32.7)	(-29.0)
Food total	233.0	178.2	175.2	192.4	187.0	184.0	194.1	212.7
	(34.3)	(-9.0)	(-17.3)	(-15.3)	(-25.6)	(-28.3)	(-22.9)	(-15.3)
Industrial raw materials	237.4	171.4	160.0	162.6	159.3	161.7	169.6	175.6
	(5.7)	(-22.4)	(-25.1)	(-33.2)	(-37.2)	(-39.0)	(-36.7)	(-34.6)
Agricultural raw materials	150.7	117.3	110.3	109.8	104.6	104.5	107.2	112.0
	(-3.5)	(-26.9)	(-31.8)	(-31.9)	(-34.5)	(-35.7)	(-33.6)	(-30.8)
Non-ferrous metals	242.2	148.1	122.7	124.9	121.6	128.4	144.5	151.8
	(-11.1)	(-42.8)	(-48.7)	(-50.0)	(-56.1)	(-56.9)	(-51.1)	(-46.4)
Iron ore, steel scrap	482.2	394.4	407.8	420.2	422.6	420.9	422.6	428.2
	(60.8)	(31.7)	(35.8)	(-10.6)	(-10.5)	(-13.2)	(-17.7)	(-21.7)
Energy	354.4	199.4	157.2	164.3	157.6	169.9	181.4	208.6
	(41.6)	(-38.3)	(-50.4)	(-49.1)	(-53.8)	(-53.9)	(-53.3)	(-52.7)

¹ On a US dollar basis, averages for the period; figures in brackets: percentage year-on-year change.

Further information: <http://www.hwwi-rohindex.org/>